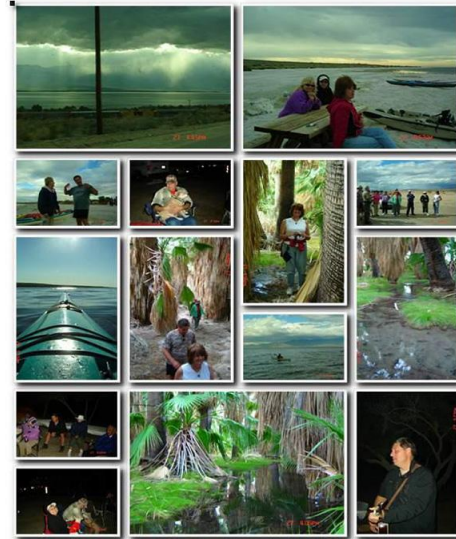
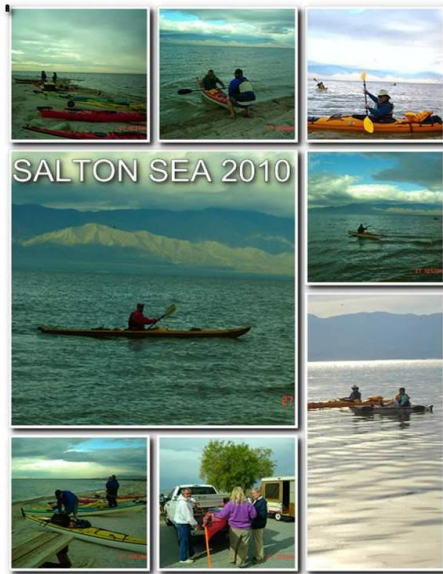


18th Annual Salton Sea Kayak & Campout at Mecca Beach

Friday, March 2 to Sunday, March 4, 2018



Join us for a weekend of paddling, camping, exploring nature & socializing!

To watch a video of previous Salton Sea & other VWKC paddling trips click here:

<http://www.valleywidekayakclub.org/who.htm#youtube>

- **Location:** Mecca Beach Campground – south end of 1st row next to sea. (see map on back page).
- **Info & Costs:** **Tent sites:** \$20 per space, 8 people max, 2 cars per space & numerous tents. We have 8 camp sites with water only reserved for VWKC at the south end of the first row next to the sea (just past the last bathroom). **RV's up to 30' are \$30; there are four sites (#138-141) available with electricity and water (no sewer) at sites just north of the last bathroom.** These sites fill up fast. Call Reserve America and ask if there are any hook-up sites available at Mecca Beach: 800-444-7275. Go to www.parks.ca.gov and choose the Salton Sea State Recreation Area for more info
- **Potluck Saturday night at 5 pm.....this year will be a Mexican them potluck!** VWKC will provide the plates, utensils, cups, etc. After dinner on Friday and Saturday night, we'll sit around the fire and tell tall paddling tales!
- **Kayaking:** On Saturday morning at 9 am, we will paddle from Mecca Beach to the Visitor Center 1 mile north where we can learn about the Salton Sea and enjoy a movie about its history. Afterwards, those that wish can paddle further north to North Shore. **Note: The sea has receded since last year and the distance to carry your kayak is further from our campsites. Please bring your kayak wheels if you have them.** The club kayaks are available to members who have kayak racks on their vehicle and can haul them. Contact Gary Hakala (951) 990-1361. On Sunday, if there is interest we will head south for a morning paddle.
- **Visit nearby Dos Palmas Preserve which is full of beautiful desert oasis'. After lunch on Saturday, I will lead a walking tour to the historic Dos Palmas Ranch and some surrounding oasis' which will involve a 2 ½ mile round trip hike from the parking lot. Those that don't want to hike that distance, can visit the closer 1 mile San Andreas Oasis.** Read an interesting article on the history of Dos Palmas dating back to the 1800's when the Bradshaw Trail led to the gold fields of LaPaz on the Colorado River. <http://www.sci.sdsu.edu/salton/DosPalmasHistory.html> Or drive to the south end of the Salton Sea to visit the Sonny Bono Bird Sanctuary, the Mud Pots and Salvation Mountain!
- **The "Sea and Desert Interpretive Association"** is a non-profit organization dedicated to supporting educational and interpretive activities of the Salton Sea State Recreation area. It sponsors the free kayak tours on Sundays. It operates a gift shop at the Visitor Center complete with a movie theatre which shows an interesting video on how the Salton Sea came to be. Go to seaanddesert.org for more information

QUESTIONS OR TO SIGN UP, CONTACT DIANE BOSS (951) 634-4952 redmountainlady@gmail.com

Maps & Directions to the Salton Sea State Recreation Area:

Directions from Hemet San Jacinto Valley:

Go North on Sanderson Hwy 79 through Lambs Canyon – 6 miles

Turn right (E) on I-10 towards Indio – 49.8 miles

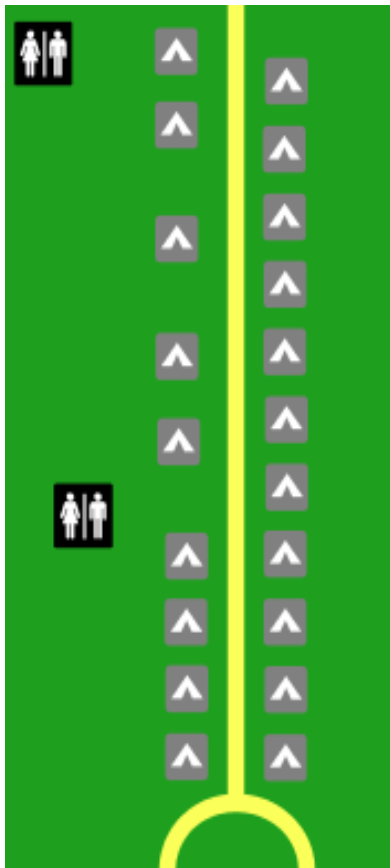
Take CA-86 EXWY S toward COACHELLA/BRAWLEY – 12.2 miles

Turn LEFT onto CA-195/66TH AVE

Continue to follow CA-195 - .8 miles

Turn RIGHT onto CA-111 – 12.0 miles. Pass the Salton Sea State Recreation Area on the right hand side of 111 and continue south 1 mile

Turn RIGHT into Mecca Beach Campground.



The Salton Sea was formed between 1905 and 1907 when the Colorado River burst through poorly built irrigation controls south of Yuma, Arizona. Almost the entire flow of the river filled the Salton Basin for more than a year, inundating communities, farms and the main line of the Southern Pacific Railroad. Continued filling of the Salton Sink was finally stopped in 1907, when a line of protective levees was built by boxcars dumping boulders into the breach from Southern Pacific tracks. By then, this inland lake was about 40 miles long and 13 miles wide, covering an area of about 400 square miles. The Salton Sea is currently 35 miles by 15 miles and can be as long as 40 miles by almost 20 miles in particularly wet years. It has an average depth of 29.9 feet and, at its deepest, is 51 feet. It contains 7.3 million acre feet of water and evaporates 1.3 million acre feet each year. There is a five-mile-long trench on the south end of the Sea that is 51 feet deep. The Sea is currently 228 feet below sea level. Interestingly, the bed of the Salton Sea is only five feet higher than the lowest spot in Death Valley. Presently, the fishery in the Salton Sea is thriving. Salinity is slightly more than the Pacific Ocean. The current salt level of the Sea is in the area of 41 to 43 TH PPM. The Pacific Ocean is about 34.9 TH PPM.. If the concentrated salt level of the Sea increases greater than 44 TH PPM., it is expected that all the fish, except the Tilapia, will cease to reproduce. Tilapia can survive up to 60 TH PPM.

◀ Map of Mecca Beach Campground (we have the 8 campsites at the bottom of this map, south end of campsite, reserved for tent campers. RV sites are above the bathroom. Some have hookups. Call Reserve America to see if hook-up RV sites are available: 800-444-7275

We will launch our kayaks from the beach next to these campsites.

:

Mecca Beach is one mile south of the Salton Sea State Recreation Area and is a large developed campground with good beach access. Mecca Beach has flush toilets and showers and a limited number of partial hook-up sites. Good fishing is found off of Mecca Beach and many swimmers and boaters enjoy the easy access to the water. Mecca Beach Campground is one of the more

Note: The 8 sites at the bottom of the map above are tent sites reserved for VWKC. No need to make a reservation unless you want one of the 4 sites above the bathroom which are for RV's and have electrical hookups.